


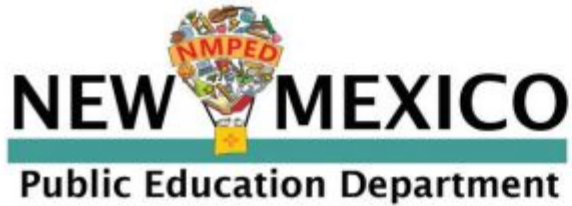
Lovington Municipal Schools

Reentry Plan 2020-21
Updated 2/1/2021

Reentry Hybrid Framework Overview

- ❖ Health and Safety
 - ❖ High Quality Instructional Models
 - ❖ Commitment to Employees
 - ❖ Athletics/Activities
 - ❖ Communication
- 

NMPED Requirements for Reentry



UPDATED JANUARY 26, 2021

COVID-19 Response Toolkit for New Mexico's Public Schools

The release of this updated toolkit replaces and supersedes the previously released Elementary Toolkit

Click the image above to access the document


NMPED Requirements for Reentry

- ❖ COVID Safe Practices
- ❖ NMPED/Fire Marshall Site Visits
- ❖ Cohorts
 - 2 Student Cohorts of not more than 50% school enrollment

	Monday	Tuesday	Wednesday	Thursday	Friday
Cohort A	In-person	In-person	Remote	Remote	Remote
Cohort B	Remote	Remote	Remote	In-person	In-person

- Campuses are closed on Wednesdays for cleaning between cohort changes
- ❖ Surveillance Testing
 - Red counties, including Lea County at this time, must COVID test 25% of employees weekly so that all employees are tested monthly

Health and Safety

- ❖ COVID Safe Practices
 - Masks required for all adults and students.
 - Social distancing
 - Ample cleaning supplies and daily sanitization protocols in place
 - Isolation areas for symptomatic individuals
 - Signage throughout campuses
 - Dismissal plans and protocols for exit and entry into buildings
 - ❖ Vaccination of Employees
 - Vaccinations are available through Nor-Lea Hospital and potentially other entities; however, at this time vaccination is not a condition of employment.
 - ❖ Air Filtration Standards
 - MERV filters, HVAC unit dampers opened, constant air flow, and operable windows and doors.
 - ❖ Personal Protective Equipment (PPE)
- 

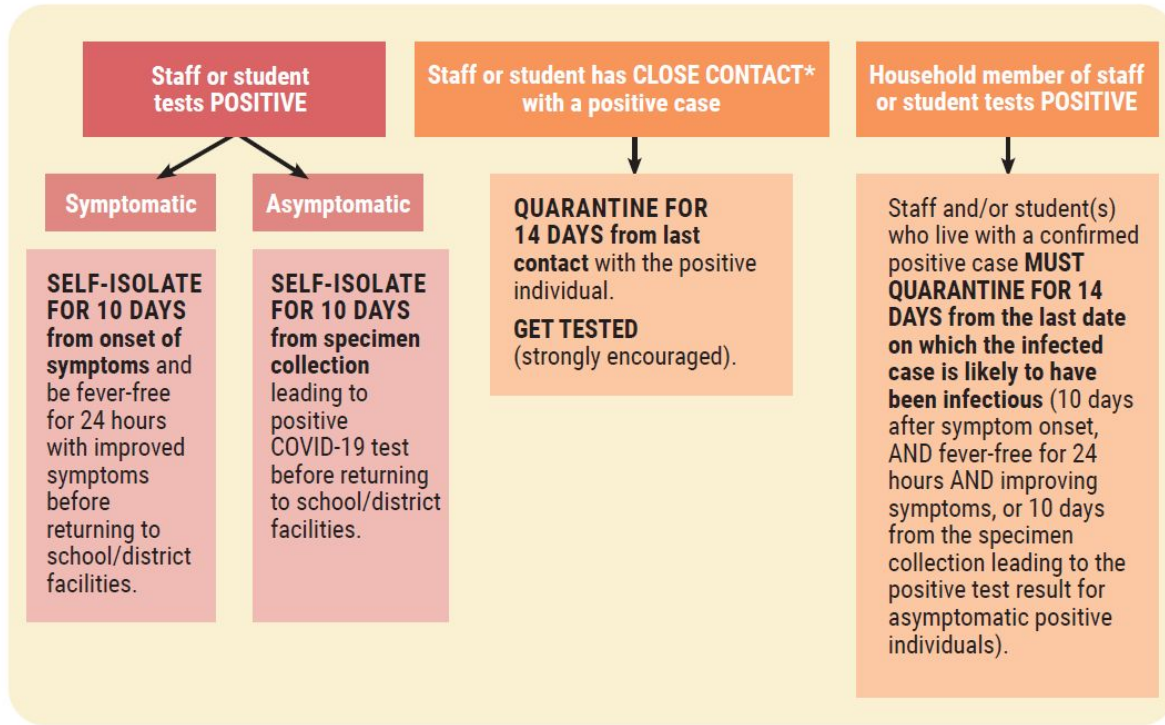
Contact Tracing

Communication regarding positive cases should be handled in a timely and thoughtful manner. Every effort should be made to maintain confidentiality of the infected individual. Within four hours of the school being notified of a positive case, the close contacts, by NMPED definition, should be notified by the school of the requirement to quarantine for 14 days from the last exposure. Students and staff identified as close contacts are highly encouraged to be tested.

Notification of the school community, per NMPED guidance, is only required if the positive case was on campus while infectious.

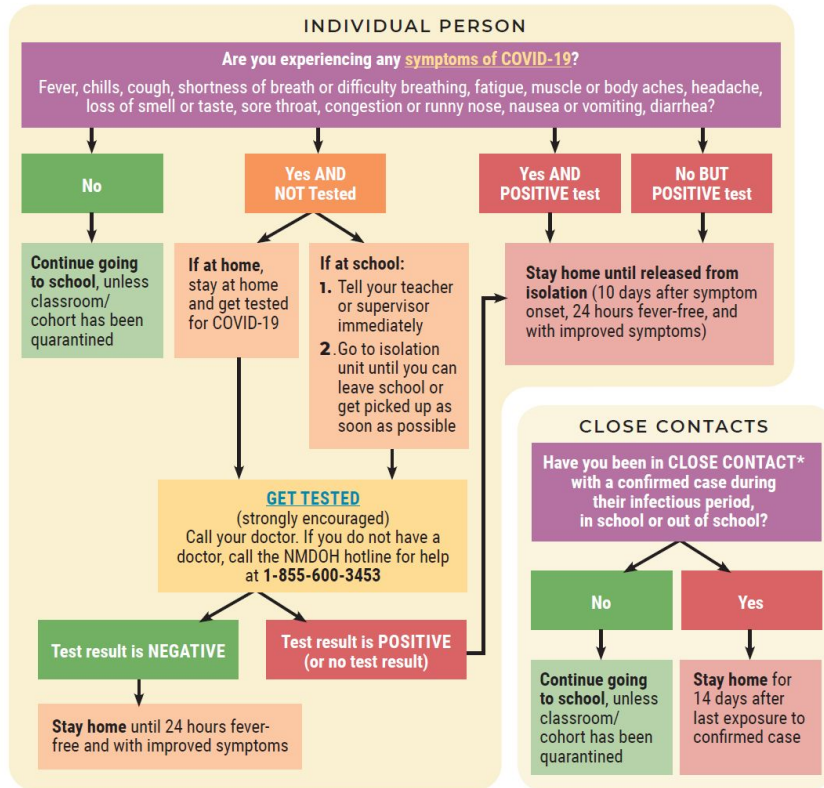


Quarantine Protocols - Staff/Student



The following decision tree was created for families, students, and staff to better understand the steps that should be taken if quarantine/self-isolation is necessary.

Quarantine Protocols - Individual




The following decision tree was created for families, students, and staff to better understand the steps that should be taken if an individual develops symptoms. Testing of close contacts (strongly encouraged) should happen 7–10 days into quarantine, or at onset of symptoms. A negative test for a close contact of a COVID-19 positive individual does not end the quarantine period.

High Quality Instructional Models

- ❖ Student/Family Choice for Hybrid Learning or Remote Learning
- ❖ Academic Supports
 - Social/Emotional Learning
 - Additional small group learning opportunities
 - Office hours for remote learning support
- ❖ Supplemental Online Curriculum Resources
- ❖ Accelerated pacing calendars
- ❖ Remote After-School Program K-5




Technology

- ❖ Chromebooks/Laptops/Tablets available for all students
 - ❖ Hot Spots available for students without internet access
 - ❖ Wifi Hubs available at school sites
 - Lea Elementary
 - West side of New Hope HS
 - Faculty parking between SGA and Jefferson Elementary
 - Taylor Middle School Gym parking lot
 - West side parking lot at Llano Elementary
 - Ag parking lot (North side Ben Alexander Elementary parking lot)
 - North side of LHS gym
- 


Athletics/Activities

- ❖ Start date of February 22, 2021, for NMAA athletics and activities on a staggered calendar. (Sport schedules being drafted by NMAA/ and local Athletic Directors)
- ❖ Small group pods will continue until February 22, 2021
- ❖ All COVID safe protocols will be strictly adhered to for all NMAA sanctioned activities.
- ❖ Visit Lovington Schools Athletics Page www.lovingtonschools.net
- ❖ www.nmact.org for calendars and guidelines updates officially from the New Mexico Activities Association
- ❖ Questions/Concerns please contact:
 - Robert Arreola
 - robertarreola@lovingtonschools.net
 - 575-739-2266

Guidelines for Student Meals

- ❖ Breakfast served in the classrooms
 - ❖ Closed campuses at lunch
 - ❖ Cafeterias and gymnasiums configured for social distancing at lunch
 - ❖ No outside food allowed after student arrival in the morning
 - ❖ Student meals will continue to be provided for remote learners
- 

Commitment to Employees

- ❖ Child Supervision Services available Thursday and Friday for children ages birth to grade 9 at no cost to employees
 - ❖ COVID Leave for quarantine and positive employees
 - ❖ Vaccinations available for employees through Nor-Lea Hospital
 - ❖ All COVID Safe Protocols and CDC/DOH health requirements have been in place since August 2020
- 

Communication

- ❖ LMSD Website: www.lovingtonschools.net
- ❖ Social Media
 - Facebook: Lovington Municipal Schools
 - Twitter: @LMSDWildcats
 - Instagram: lmsd_wildcats
- ❖ Remind App
- ❖ School Messenger
 - RoboCalls
- ❖ Surveys
- ❖ communications@lovingtonschools.net

